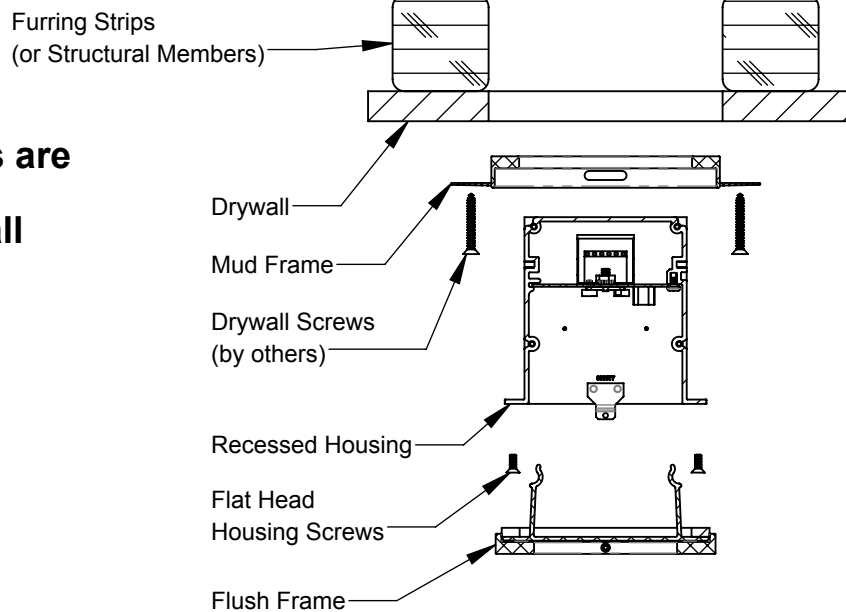


INSTALLATION INSTRUCTIONS

Model: **CV1609/11/13/15**
 Fixture Family: **Visage Flush Frame**
 Document Description: Installation Instructions for Visage Flush Frame
 CV Series Luminaires

VISA LIGHTING
 AN OLDENBURG GROUP COMPANY
 1717 West Civic Drive Milwaukee, WI 53209
 414-354-6600
 Design Modification Rights Reserved
 © Visa Lighting 2016

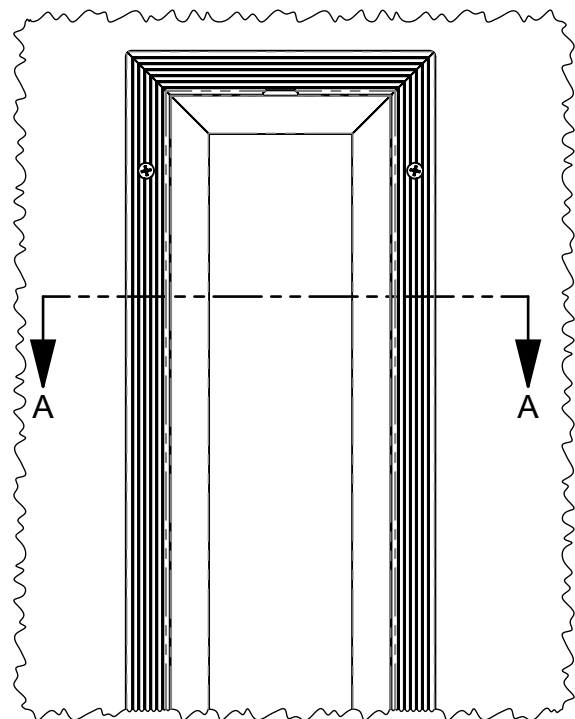
Note:
Flush Frame Models are only suitable for installation in drywall without tile work



SECTION A-A

INSTRUCTIONS

1. Cut out Rectangular Opening in the drywall, ceiling or wall (See Sheet 2)
2. Add Furring strips along long edges flush with opening. These can also be Structural Members if desired.
3. Install Mud Frame (See IMPORTANT NOTE Sheet 3) with screws long enough to secure to Furring Strips and apply mud (Mud Frame is available to be shipped ahead of time with -RB Option)
4. Loosen Screws and remove LED Plate, then Connect Flexible Conduit to End cap (See Sheet 2)
5. Install Recessed Housing into Opening (See Sheet 3)
6. Secure with (4) Flat Head Screws (Sheet 3)
7. Make Electrical connections per appropriate codes and reinstall LED Plate
8. Test
9. Install Flush Frame in place. Note there is a Pry Out Slot for removal when needed.
***** IMPORTANT SAFETY STEP***** Secure Frame in place with set screw at end of Frame (See Sheet 3)



Drawing: 762355XX

Rev: A

Sheet: 1 of 3

Eng: MJH

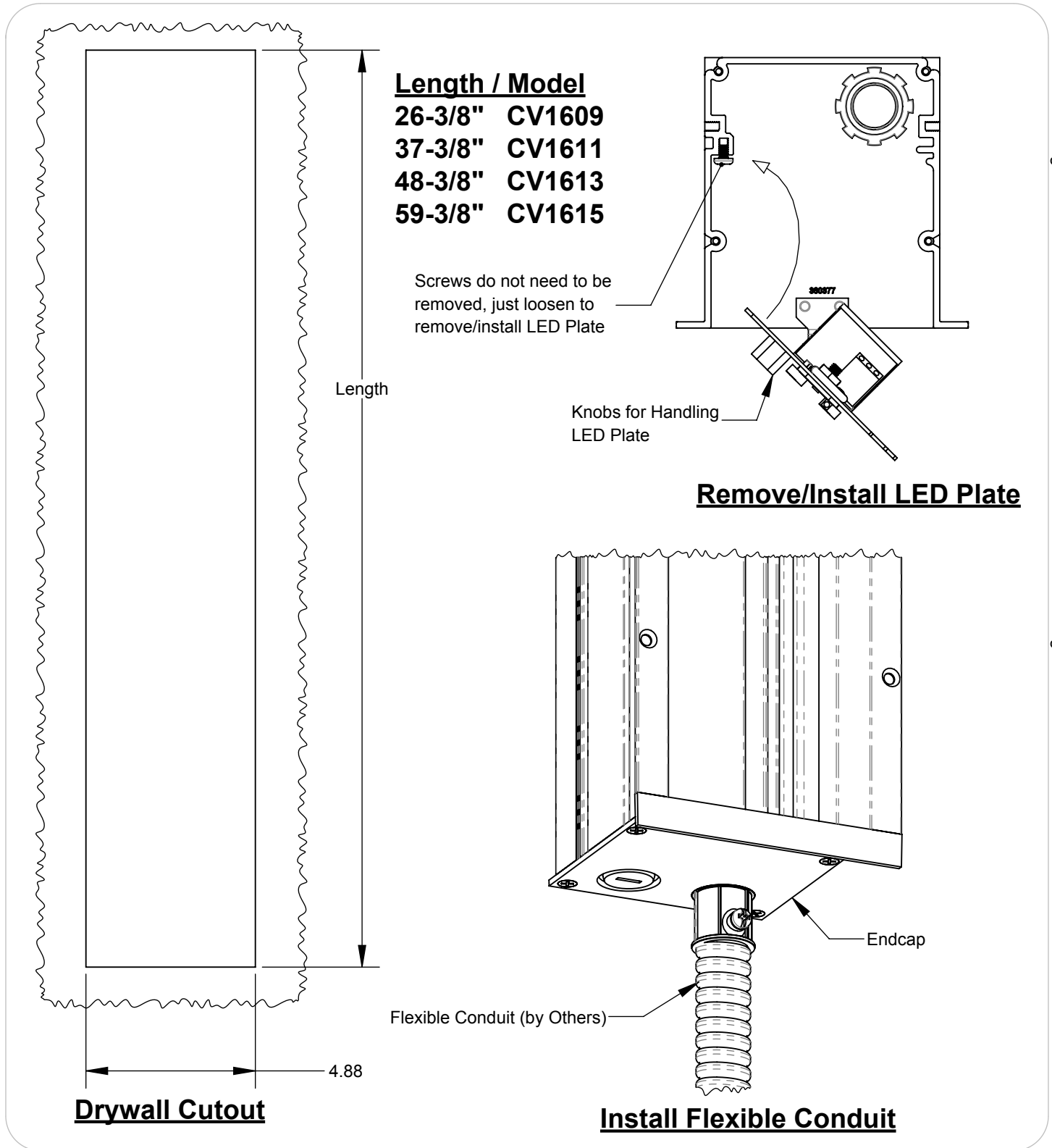
Date Drawn: 9/8/20

! When using electrical equipment, basic safety precautions should always be followed, including the following:

- Read all instructions carefully before installing and save for future use.
- Make sure all connections are in accordance with the National Electrical Code and local regulations.
- To avoid possible electric shock, be sure the power supply is turned off before servicing or installing the fixture
- Service should be performed by qualified personnel.
- These instructions may not cover all details or variations. If additional information is needed, please contact Visa Lighting.

INSTALLATION INSTRUCTIONS

Model: **CV1609/11/13/15**
 Fixture Family: **Visage Flush Frame**
 Document Description: Installation Instructions for Visage Flush Frame
 CV Series Luminaires



Drawing: 762355XX

Rev: A

Sheet: 2 of 3

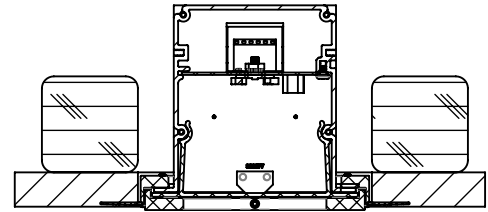
Eng: MJH

Date Drawn: 9/8/20

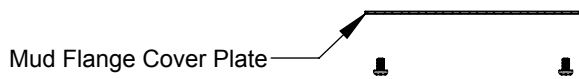
- !** When using electrical equipment, basic safety precautions should always be followed, including the following:
- Read all instructions carefully before installing and save for future use.
 - Make sure all connections are in accordance with the National Electrical Code and local regulations.
 - To avoid possible electric shock, be sure the power supply is turned off before servicing or installing the fixture.
 - Service should be performed by qualified personnel.
 - These instructions may not cover all details or variations. If additional information is needed, please contact Visa Lighting.

INSTALLATION INSTRUCTIONS

Model: **CV1609/11/13/15**
Fixture Family: **Visage Flush Frame**
Document Description: Installation Instructions for Visage Flush Frame
CV Series Luminaires



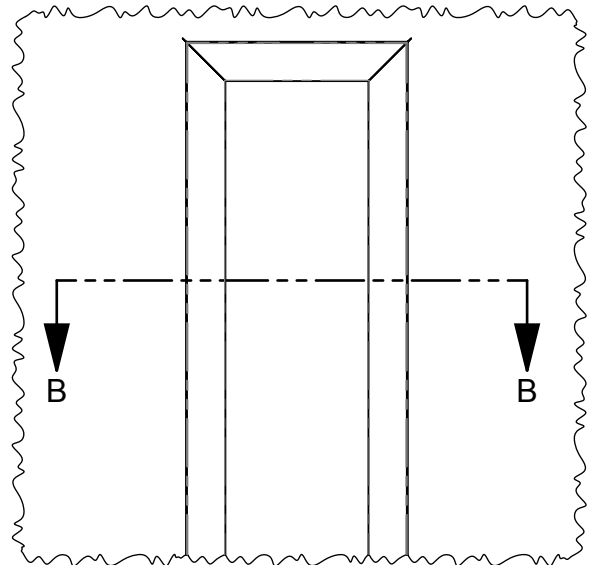
SECTION **B-B**



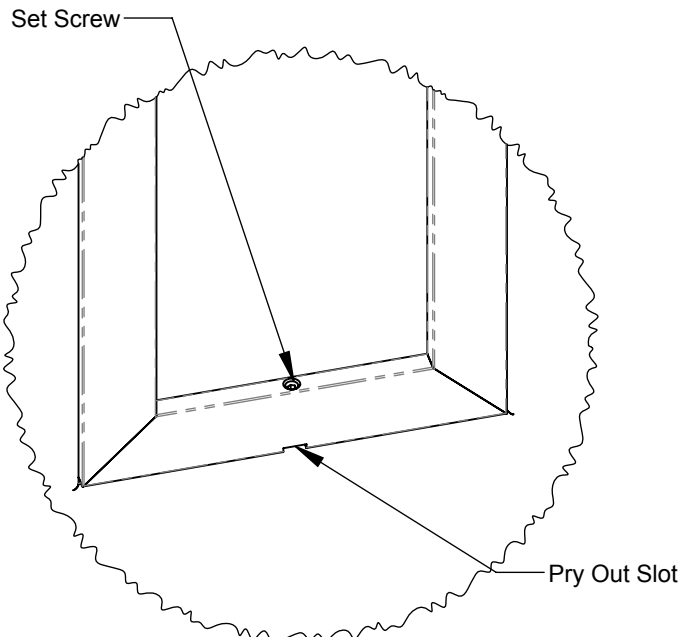
Mud Flange Cover Plate

IMPORTANT NOTE:
Leave attached during
installation to keep Mud
Flange Square and for wall
Painting

Mud Flange



Installed View



IMPORTANT - Secure With Set Screw

- When using electrical equipment, basic safety precautions should always be followed, including the following:
- Read all instructions carefully before installing and save for future use.
 - Make sure all connections are in accordance with the National Electrical Code and local regulations.
 - To avoid possible electric shock, be sure the power supply is turned off before servicing or installing the fixture.
 - Service should be performed by qualified personnel.
 - These instructions may not cover all details or variations. If additional information is needed, please contact Visa Lighting.