

CM1986-W SYMMETRY™

Behavioral Health — 23" Overbed — White


VisaLighting.com/products/Symmetry

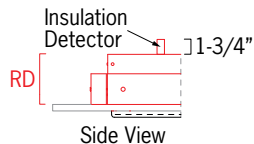
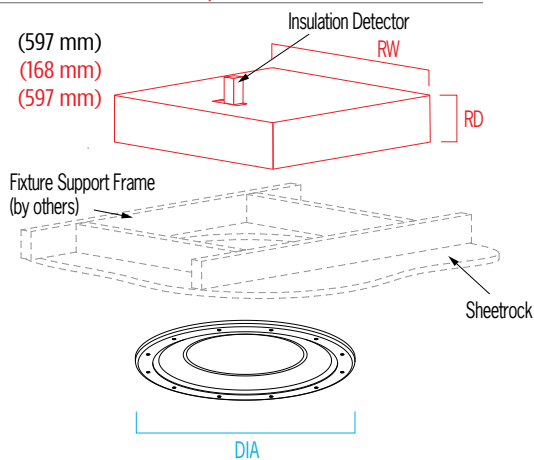
Type: _____ Project: _____ Location: _____



DIMENSIONS

DIA = Diameter RD = Recessed Depth RW = Recessed Width

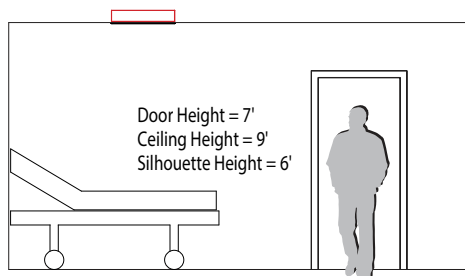
DIA 23-1/2" (597 mm)
RD 6-5/8" (168 mm)
RW 23-1/2" (597 mm)



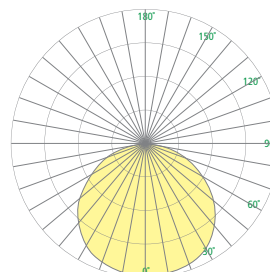
FEATURES

- Integral driver located within the housing and accessible from below the ceiling
- Low voltage patient control (LVPC-DIM) switching interface option for pillow speaker/nurse call systems
- Optional 90+ CRI (delivered lumens reduced by 5%)
- Remote emergency driver
- High Abuse lens and frame features 3/16" thick, high impact clear polycarbonate secured with tamper resistant fasteners; tested to >100 joules impact
- Ligature resistant; sheetrock/drywall installation (see installation instructions), not suited for grid ceiling installation
- Not suitable for insulation contact
- Recyclable aluminum housing
- Frosted acrylic lens uniquely formed in a gentle concave profile with graceful, shallow dome in the center (patent pending)
- Antimicrobial finishes (no VOC) on all interior and exterior painted surfaces
- ETL listed for damp locations. Not suited for exterior applications

RELATIVE SCALE DRAWING



PHOTOMETRICS



CM1986-W SYMMETRY (cont.)

Behavioral Health — 23" Overbed — White



Fill in shaded boxes using information listed below

CM1986-W

MODEL	SOURCE ¹	SOURCE OPTION ²	VOLTAGE ³	DIMMING CONTROL OPTION ⁴	LENS FRAME FINISH	OPTION ⁵
	L30K L35K L40K	90CRI Minimum 80CRI is standard if 90CRI option is not selected	120V 277V	DALI LVPC-DIM LVPC-DIM not available with DALI	 See last page for finish order codes	NGT

SOURCE¹ (Select one)

Dimmable 0-10V to 1%
Minimum 80CRI, within 3-step MacAdam

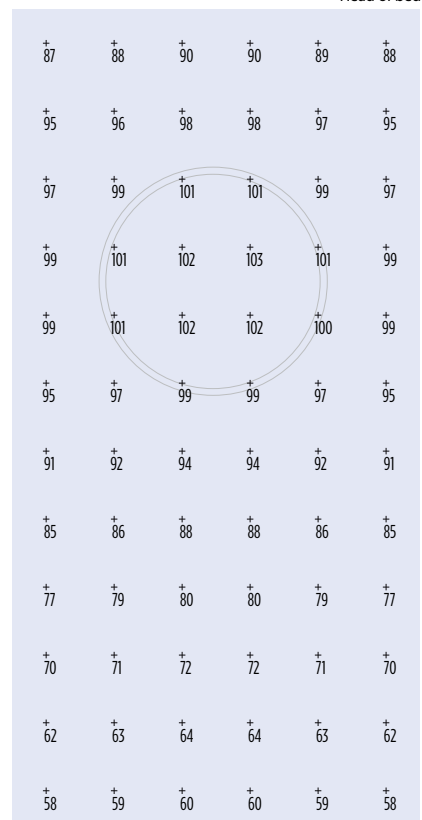
Source	CCT	Delivered Lumens		
		Ambient	Exam	Combined
L30K	3000K	3800	6100	9800
L35K	3500K	3900	6300	10100
L40K	4000K	4000	6400	10300
Power (watts)		52	74	124

Note: Fixture provided with separate ambient and exam circuits.

VOLTAGE³ (Select one)

120V	120VAC, 50/60 Hz
277V	277VAC, 50/60 Hz

Illuminance (Fc)



Average = 86.4
Maximum = 102
Minimum = 57.9
Avg/Min Ratio = 1.5
Max/Min Ratio = 1.8

SOURCE OPTION²

Minimum 80 CRI within 3-step MacAdam is standard if option is not selected

90CRI	Color rendering index minimum 90, minimum R9 value of 50 (delivered lumens reduced by 5%)
-------	---

DIMMING CONTROL OPTION⁴

Dimmable 0-10V to 1% is standard if DALI option is not selected

▲ Option availability may be interdependent with Voltage, Source or Other Options

DALI	Control via DALI protocol, dimming to minimum 1%
LVPC-DIM	Integral Low Voltage patient controller interface. Not compatible with DALI option

OPTION⁵

NGT	Night light (amber)
-----	---------------------

CM1986-W SYMMETRY (cont.)

Behavioral Health — 23" Overbed — White



SYMMETRY PRODUCT FAMILY

Behavioral Health – Overbed	CM1976-W — 45" CM1986-W — 23"
Behavioral Health – General Use	CM1978-W — 45" CM1988-W — 23"
Behavioral Health – Tunable	CM1978-T — 45" CM1982-T — 23"
Overbed	CM1970-W — 45" CM1980-W — 23"
General Use	CM1972-W — 45" CM1982-W — 23"
Tunable	CM1972-T — 45" CM1988-T — 23"

See [Visalighting.com/Products/Symmetry](https://visalighting.com/Products/Symmetry) for more information

FINISHES

Specify color code when ordering. For accurate color matching, individual paint and finish samples are [available upon request](#). For more information about our finishes visit visalighting.com/finishes

Powder Coat Paint Finishes (Standard)

AGGY Agate Grey	ALGN Alpine Green	BJBG Baja Beige	BMAT Bronze Matte	BRNZ Bronze	BSIL Blade Silver	CVBL Cove Blue
DEOR Deoro Gold	GLWT Glacier White	GSIL Graphite Silver	HRGR Harbor Grey	JTBK Jet Black	OCBL Ocean Blue	SHGR Shoreline Grey
SBGN Sagebrush Green	SLGR Slate Grey	SSTP Sierra Taupe	TRCN Terracotta Canyon	TRWT Traffic White	VBLK Velvet Black	VNRD Vineyard Red