

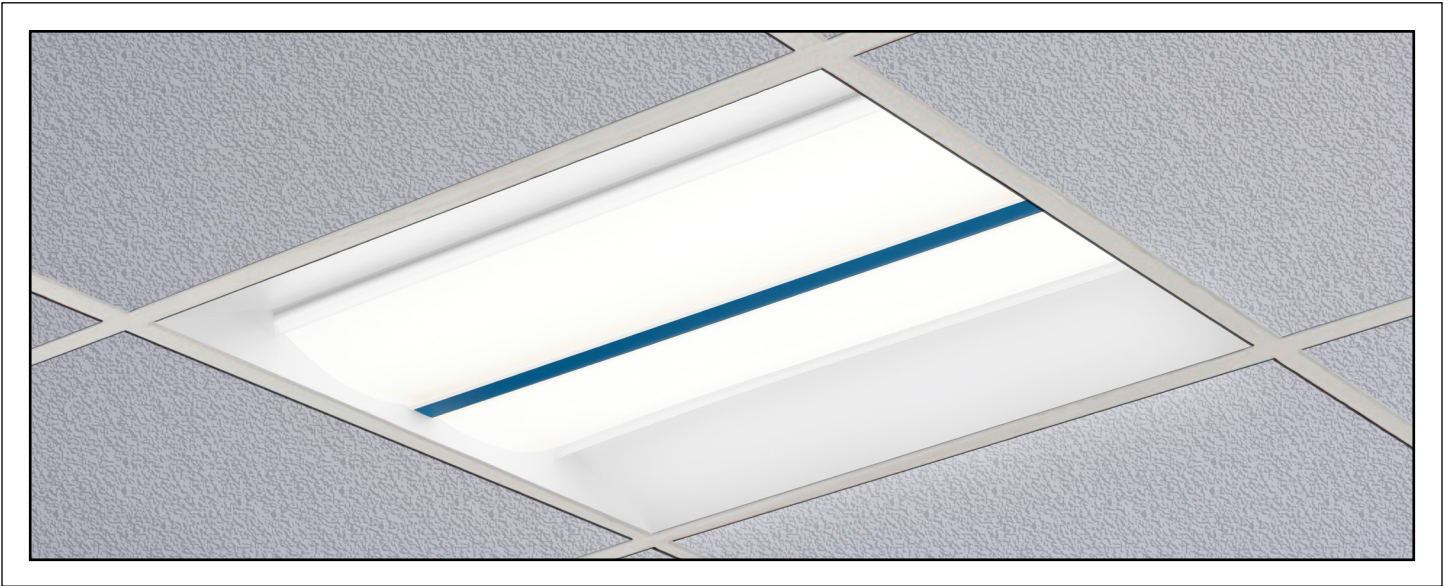
CM2082-W JASPER™

2'x2' White LED




VisaLighting.com/products/Jasper

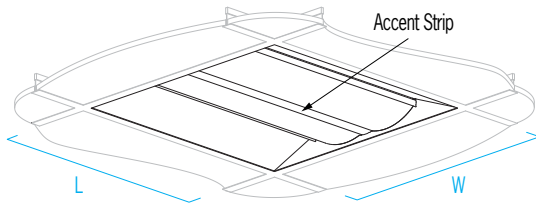
Type: _____ Project: _____ Location: _____



DIMENSIONS

W = Width L = Length RD = Recessed Depth

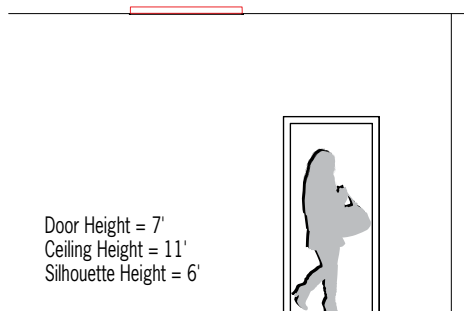
- L 23-3/4" (603 mm)
 - W 23-3/4" (603 mm)
 - RD 3" (76 mm)
 - RD 3-1/2" (89 mm) (IEM option)
- 



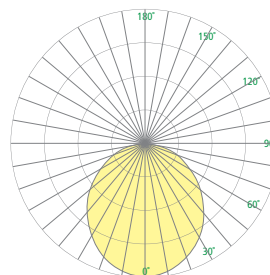
FEATURES

- Integral driver
- Multiple levels of lumen output
- Optional 90+ CRI
- Low plenum depth enables use in “busy” recessed plenums or retrofit projects
- Mounts to standard 15/16”, 9/16”, or screw-slot grid ceiling systems
- Integral T-bar retaining clips
- Integral mounting points for suspension cables (by others) to building structure
- Optional NEC Article 410 compliant “earthquake clips” (EQC option)
- Optional flange kit for mounting to drywall ceilings (SRI option)
- Extruded, frosted acrylic lens with diffusing optical film
- Die-formed enclosure
- Fabricated aluminum accent strip available in powder coat, brushed aluminum, and eight exclusive, eco-friendly alternative finishes
- Not suitable for insulation contact
- ETL listed for damp locations. Not suited for exterior applications

RELATIVE SCALE DRAWING



PHOTOMETRICS



CM2082-W JASPER (cont.)

2'x2' White LED



Fill in shaded boxes using information listed below

CM2082-W

MODEL	SOURCE ¹	VOLTAGE ² MVOLT 347V	SOURCE OPTION ³ 90CRI IEM	DIMMING CONTROL OPTION ⁴ DALI	ACCENT STRIP FINISH	OPTION(S) ⁵ DCC EQC SRI WHIP
	L30K(VH) L30K(H) L30K(L) L30K(VL) L35K(VH) L35K(H) L35K(L) L35K(VL) L40K(VH) L40K(H) L40K(L) L40K(VL)		IEM not available with 347V Minimum 80CRI is standard if 90CRI option is not selected	0-10V dimming if DALI option not selected DALI not available with 347V	See last page for finish order codes	

SOURCE¹ (Select one)

Dimmable 0-10V to 1%, Minimum 80CRI, within 3-step MacAdam

Source	CCT	Delivered Lumens	Power (Watts)
L30K(VH)	3000K	5200	45
L30K(H)	3000K	4300	35
L30K(L)	3000K	3300	26
L30K(VL)	3000K	2200	17
L35K(VH)	3500K	5200	45
L35K(H)	3500K	4400	35
L35K(L)	3500K	3300	26
L35K(VL)	3500K	2300	17
L40K(VH)	4000K	5300	45
L40K(H)	4000K	4500	35
L40K(L)	4000K	3400	26
L40K(VL)	4000K	2300	17

VOLTAGE² (Select one)

MVOLT	120-277V, 50/60 Hz
347V	50/60 Hz (Not available with DALI or IEM option)

LUMEN MAINTENANCE RATING

L80 (reported)	>50,000 hrs
-----------------------	-------------

Reported Lifetime per IES TM-21

SOURCE OPTION³

⚠ Option availability may be interdependent with Voltage, Source or Other Options

90CRI	Color rendering index minimum 90, minimum R9 value of 50 (delivered lumens reduced by 5%) (Minimum 80 CRI within 3-step MacAdam is standard if option is not selected)
IEM	90-minute emergency battery pack supplying 10W of power to light sources (multiply fixture delivered lumens per watt by 10 watts for nominal emergency mode lumen output) (Not available with 347V option)

DIMMING CONTROL OPTION⁴

⚠ Option availability may be interdependent with Voltage, Source or Other Options

0-10V dimmable to 1% if DALI option is not selected

DALI	Control via DALI protocol, dimming to minimum 1% (Not available with 347V option)
-------------	---

Options continued on Page 3

CM2082-W JASPER (cont.)

2'x2' White LED



OPTION(S)⁵ (Multiple selections allowed)

DCC	Damp clear coat for metal finishes (required for 5 year warranty when used in damp locations)
EQC	“Earthquake clip” t-bar mounting brackets (2 provided)
SRI	Drywall ceiling mounting kit
WHIP	Pre-wired 6-foot long 18AWG flex conduit whip, conductors per fixture configuration (contact factory for details)

JASPER PRODUCT FAMILY

- [CM2082-W – 2'x2' White](#)
- [CM2082-T – 2'x2' Tunable](#)
- [CM2084-W – 2'x4' Tunable](#)
- [CM2084-T – 2'x4' Tunable](#)
- [CM2094 – 2'x4' Overbed](#)

See [Visalighting.com/Products/Jasper](https://visalighting.com/Products/Jasper) for more information

SUGGESTED VARIATION

- Custom colors

CM2082-W JASPER (cont.)

2'x2' White LED



FINISHES

Specify color code when ordering. For accurate color matching, individual paint and finish samples are [available upon request](#).
For more information about our finishes visit visalighting.com/finishes

Powder Coat Paint Finishes (Standard)

AGGY Agate Grey	ALGN Alpine Green	BJBG Baja Beige	BMAT Bronze Matte	BRNZ Bronze	BSIL Blade Silver	CVBL Cove Blue
DEOR Deoro Gold	GLWT Glacier White	GSIL Graphite Siver	HRGR Harbor Grey	JTBK Jet Black	OCBL Ocean Blue	SHGR Shoreline Grey
SBGN Sagebrush Green	SLGR Slate Grey	SSTP Sierra Taupe	TRCN Terracotta Canyon	TRWT Traffic White	VBLK Velvet Black	VNRD Vineyard Red

Alternative Metal Finishes (Premium)

BBA Brushed Brass Alternative	BCA Brushed Chrome Alternative	BUA Brushed Copper Alternative	BZA Brushed Bronze Alternative
OBA Oil-Rubbed Bronze Alternative	PRA Pewter Alternative	RBA Rustic Brass Alternative	SNA Satin Nickel Alternative

Metal Finish (Premium)

BA Brushed Aluminum