

# CM2084-W JASPER

## 2'x4' White LED


[VisaLighting.com/products/Jasper](https://VisaLighting.com/products/Jasper)

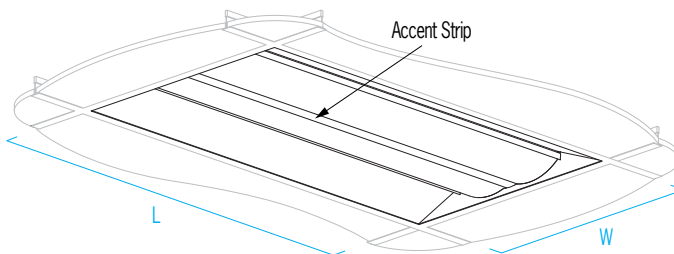
Type: \_\_\_\_\_ Project: \_\_\_\_\_ Location: \_\_\_\_\_



### DIMENSIONS

W = Width    L = Length    RD = Recessed Depth

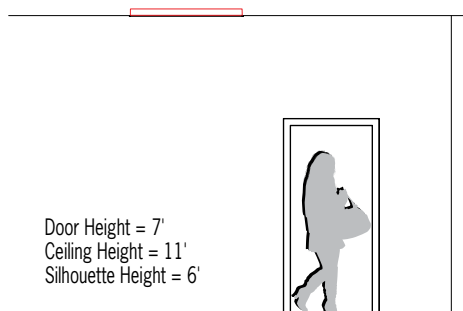
L	47-3/4"	(1213 mm)	
W	23-3/4"	(603 mm)	
RD	3"	(76 mm)	
RD	3-1/2"	(89 mm) (IEM option)	



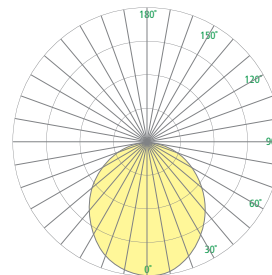
### FEATURES

- Integral driver
- Multiple levels of lumen output
- Optional 90+ CRI
- Low plenum depth enables use in "busy" recessed plenums or retrofit projects
- Mounts to standard 15/16", 9/16", or screw-slot grid ceiling systems
- Integral T-bar retaining clips
- Integral mounting points for suspension cables (by others) to building structure
- Optional NEC Article 410 compliant "earthquake clips" (EQC option)
- Optional flange kit for mounting to drywall ceilings (SRI option)
- Extruded, frosted acrylic lens with diffusing optical film
- Die-formed enclosure
- Fabricated aluminum accent strip available in Non VOC powder coat, brushed aluminum, and eight exclusive, eco-friendly alternative finishes
- Not suitable for insulation contact
- ETL listed for damp locations. Not suited for exterior applications

### RELATIVE SCALE DRAWING



### PHOTOMETRICS



ETL Listed

5 Year Warranty

# CM2084-W JASPER (cont.)

## 2'x4' White LED



Fill in shaded boxes using information listed below

### CM2084-W

MODEL	SOURCE <sup>1</sup>	VOLTAGE <sup>2</sup>	SOURCE OPTION <sup>3</sup>	DIMMING CONTROL OPTION <sup>4</sup>	ACCENT STRIP FINISH	OPTION(S) <sup>5</sup>
	L30K(VH) L30K(H) L30K(L) L30K(VL) L35K(VH) L35K(H) L35K(L) L35K(VL) L40K(VH) L40K(H) L40K(L) L40K(VL)	MVOLT 347V	90CRI IEM  IEM not available with 347V  Minimum 80CRI is standard if 90CRI option is not selected	DALI  0-10V dimming if DALI option not selected  DALI not available with 347V	See last page for finish order codes	DCC EQC SRI WHIP

#### SOURCE<sup>1</sup> (Select one)

Dimmable 0-10V to 1%, Minimum 80CRI, within 3-step MacAdam

Source	CCT	Delivered Lumens	Power (Watts)
L30K(VH)	3000K	7900	63
L30K(H)	3000K	6000	47
L30K(L)	3000K	4400	31
L30K(VL)	3000K	2200	15
L35K(VH)	3500K	8200	63
L35K(H)	3500K	6200	47
L35K(L)	3500K	4500	31
L35K(VL)	3500K	2300	15
L40K(VH)	4000K	8300	63
L40K(H)	4000K	6300	47
L40K(L)	4000K	4600	31
L40K(VL)	4000K	2300	15

#### VOLTAGE<sup>2</sup> (Select one)

MVOLT	120-277V, 50/60 Hz
347V	50/60 Hz (Not available with DALI or IEM option)

#### LUMEN MAINTENANCE RATING

L80 (reported)	>50,000 hrs
----------------	-------------

Reported Lifetime per IES TM-21

#### SOURCE OPTION<sup>3</sup>

⚠ Option availability may be interdependent with Voltage, Source or Other Options

90CRI	Color rendering index minimum 90, minimum R9 value of 50 (delivered lumens reduced by 5%) (Minimum 80 CRI within 3-step MacAdam is standard if option is not selected)
IEM	90-minute emergency battery pack supplying 10W of power to light sources (multiply fixture delivered lumens per watt by 10 watts for nominal emergency mode lumen output) (Not available with 347V option)

#### DIMMING CONTROL OPTION<sup>4</sup> (Select one)

⚠ Option availability may be interdependent with Voltage, Source or Other Options

0-10V dimmable to 1% if DALI option is not selected

DALI	Control via DALI protocol, dimming to minimum 1% (Not available with 347V option)
------	---

Options continued on Page 3

# CM2084-W JASPER (cont.)

## 2'x4' White LED



### OPTION(S)<sup>5</sup> (Multiple selections allowed)

<b>DCC</b>	Damp clear coat for metal finishes (required for 5 year warranty when used in damp locations)
<b>EQC</b>	“Earthquake clip” t-bar mounting brackets (2 provided)
<b>SRI</b>	Drywall ceiling mounting kit
<b>WHIP</b>	Pre-wired 6-foot long 18AWG flex conduit whip, conductors per fixture configuration (contact factory for details)

### JASPER PRODUCT FAMILY

- [CM2082-W – 2'x2' White](#)
- [CM2082-T – 2'x2' Tunable](#)
- [CM2084-W – 2'x4' Tunable](#)
- [CM2084-T – 2'x4' Tunable](#)
- [CM2094 – 2'x4' Overbed](#)

See [Visalighting.com/Products/Jasper](https://visalighting.com/Products/Jasper) for more information

### SUGGESTED VARIATION

- Custom colors

# CM2084-W JASPER (cont.)

## 2'x4' White LED



### FINISHES

Specify color code when ordering. For accurate color matching, individual paint and finish samples are [available upon request](#).  
For more information about our finishes visit [visalighting.com/finishes](https://visalighting.com/finishes)

#### Powder Coat Paint Finishes (Standard)

<b>AGGY</b> Agate Grey	<b>ALGN</b> Alpine Green	<b>BJBG</b> Baja Beige	<b>BMAT</b> Bronze Matte	<b>BRNZ</b> Bronze	<b>BSIL</b> Blade Silver	<b>CVBL</b> Cove Blue
<b>DEOR</b> Deoro Gold	<b>GLWT</b> Glacier White	<b>GSIL</b> Graphite Siver	<b>HRGR</b> Harbor Grey	<b>JTBK</b> Jet Black	<b>OCBL</b> Ocean Blue	<b>SHGR</b> Shoreline Grey
<b>SBGN</b> Sagebrush Green	<b>SLGR</b> Slate Grey	<b>SSTP</b> Sierra Taupe	<b>TRCN</b> Terracotta Canyon	<b>TRWT</b> Traffic White	<b>VBLK</b> Velvet Black	<b>VNRD</b> Vineyard Red

#### Alternative Metal Finishes (Premium)

<b>BBA</b> Brushed Brass Alternative	<b>BCA</b> Brushed Chrome Alternative	<b>BUA</b> Brushed Copper Alternative	<b>BZA</b> Brushed Bronze Alternative
<b>OBA</b> Oil-Rubbed Bronze Alternative	<b>PRA</b> Pewter Alternative	<b>RBA</b> Rustic Brass Alternative	<b>SNA</b> Satin Nickel Alternative

#### Metal Finish (Premium)

<b>BA</b> Brushed Aluminum