

CM2094 JASPER

2'x4' Overbed LED


VisaLighting.com/products/Jasper

Type: _____ Project: _____ Location: _____



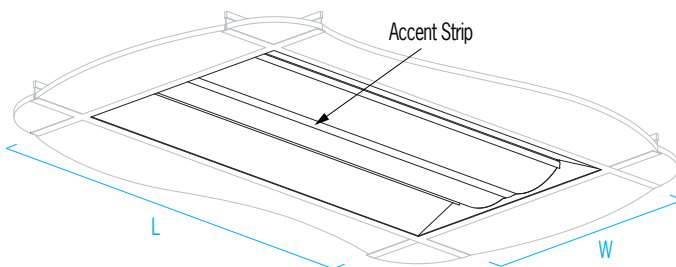
DIMENSIONS

W = Width L = Length RD = Recessed Depth

L 47-3/4" (1213 mm)

W 23-3/4" (603 mm)

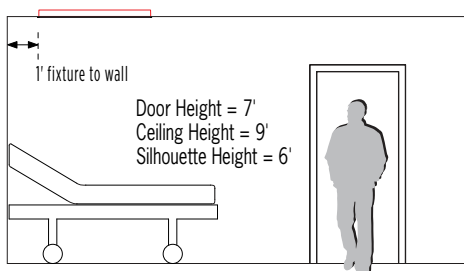
RD 3" (76 mm)



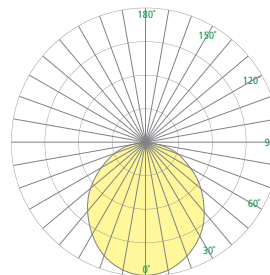
FEATURES

- Integral driver
- Separate circuits for ambient and exam functions
- Optional night light function produces CS < 0.01 on bed surface at normal mounting heights
- Low plenum depth enables use in "busy" recessed plenums or retrofit projects
- Mounts to standard 15/16", 9/16", or screw-slot grid ceiling systems
- Integral T-bar retaining clips
- Integral mounting points for suspension cables (by others) to building structure
- Optional NEC Article 410-16 compliant "earthquake clips" (EQC option)
- Optional flange kit for mounting to drywall ceilings (SRI option)
- Extruded, frosted acrylic lens with diffusing optical film
- Die-formed enclosure
- Fabricated aluminum accent strip available in 16 powder coat colors, brushed aluminum, or eight exclusive, eco-friendly alternative finishes
- Not suitable for insulation contact
- ETL listed for damp locations. Not suited for exterior applications

RELATIVE SCALE DRAWING



PHOTOMETRICS



CM2094 JASPER (cont.)

2'x4' Overbed LED



Fill in shaded boxes using information listed below

CM2094						
MODEL	SOURCE ¹	VOLTAGE ²	SOURCE OPTION ³	DIMMING CONTROL OPTION ⁴	ACCENT STRIP FINISH	OPTION(S) ⁵
	L30K L35K L40K	120V 277V	90CRI NGT	DALI	See last page for finish order codes	DCC EQC SRI
			Minimum 80CRI is standard if 90 CRI option is not selected	0-10V dimming if DALI option not selected		

SOURCE¹ (Select one)

Dimmable 0-10V to 1%, Minimum 80CRI, within 3-step MacAdam

Source	CCT Range	Delivered Lumens		
		Ambient	Exam	Combined
L30K	3000K	3300	7900	11100
L35K	3500K	3400	8100	11500
L40K	4000K	3400	8300	11700
Power (Watts)		30	81	111

Separate circuits for ambient and exam functions

VOLTAGE² (Select one)

120V	50/60 Hz
277V	50/60 Hz

LUMEN MAINTENANCE RATING

L80 (reported)	>50,000 hrs
----------------	-------------

Reported Lifetime per IES TM-21

SOURCE OPTION(S)³ (Multiple selections allowed)

80 CRI within 3-step MacAdam is standard if 90CRI option is not selected

90CRI	Color rendering index minimum 90, minimum R9 value of 50 (delivered lumens reduced by 15%)
NGT	Nightlight (amber)

DIMMING CONTROL OPTION⁴ (Select one)

0-10V dimmable to 1% if DALI option is not selected

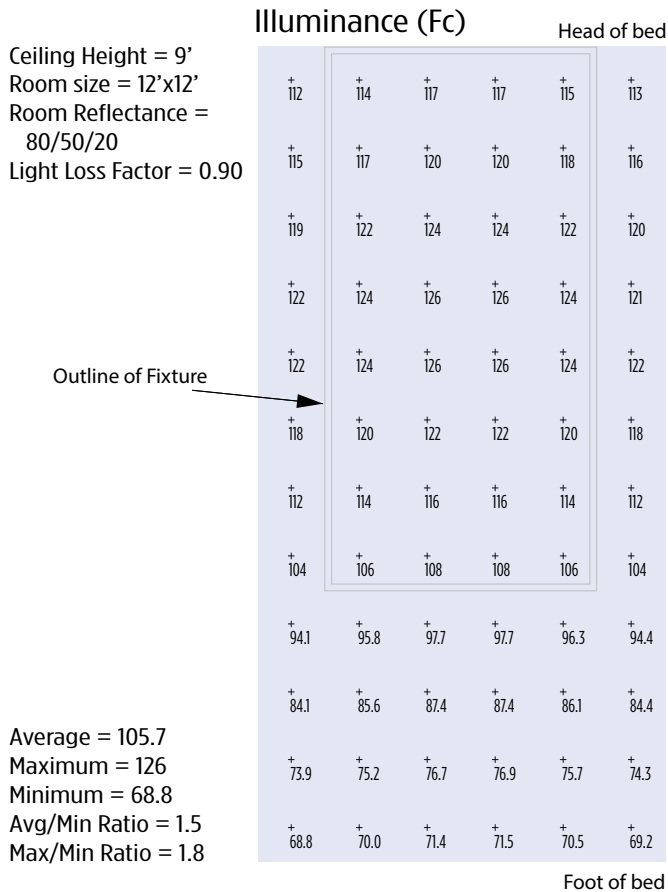
DALI	Control via DALI protocol, dimming to minimum 1%
------	--

OPTION(S)⁵ (Multiple selections allowed)

DCC	Damp clear coat for metal finishes (required for 5 year warranty when used in damp locations)
EQC	"Earthquake clip" t-bar mounting brackets (2 provided)
SRI	Drywall ceiling mounting kit

CM2094 JASPER (cont.)

2'x4' Overbed LED



SUGGESTED VARIATIONS

- Custom colors

JASPER PRODUCT FAMILY

- CM2082-W – 2'x2' White
- CM2082-T – 2'x2' Tunable
- CM2084-W – 2'x4' Tunable
- CM2084-T – 2'x4' Tunable
- CM2094 – 2'x4' Overbed

See [Visalighting.com/Products/Jasper](https://visalighting.com/Products/Jasper) for more information

CM2094 JASPER (cont.)

2'x4' Overbed LED



FINISHES

Specify color code when ordering. For accurate color matching, individual paint and finish samples are [available upon request](#).
For more information about our finishes visit visalighting.com/finishes

Powder Coat Paint Finishes (Standard)

AGGY Agate Grey	ALGN Alpine Green	BJBG Baja Beige	BMAT Bronze Matte	BRNZ Bronze	BSIL Blade Silver	CVBL Cove Blue
DEOR Deoro Gold	GLWT Glacier White	GSIL Graphite Silver	HRGR Harbor Grey	JTBK Jet Black	OCBL Ocean Blue	SHGR Shoreline Grey
SBGN Sagebrush Green	SLGR Slate Grey	SSTP Sierra Taupe	TRCN Terracotta Canyon	TRWT Traffic White	VLBK Velvet Black	VNRD Vineyard Red

Alternative Metal Finishes (Premium)

BBA Brushed Brass Alternative	BCA Brushed Chrome Alternative	BUA Brushed Copper Alternative	BZA Brushed Bronze Alternative
OBA Oil-Rubbed Bronze Alternative	PRA Pewter Alternative	RBA Rustic Brass Alternative	SNA Satin Nickel Alternative

Metal Finish (Premium)

BA Brushed Aluminum