



# Finishes Guide





# Powder Coat Paint Finishes

With no solvents or hazardous materials, our powder coat painting process is more consistent, durable, and environmentally friendly than conventional liquid paint. Most of our products are offered in 20 rich and enduring powder coat paint finishes. Powder coating eliminates runs, drips and sags during the painting process, and protects against chips, abrasions, UV light, chemicals, and heat (up to 400° F).

We also offer additional RAL colors and custom color matching for a slight premium charge.



**Traffic White**  
TRWT  
RAL 9016



**Glacier White**  
GLWT  
RAL 9003



**Shoreline Grey**  
SHGR  
RAL 060-70-05



**Agate Grey**  
AGGY  
RAL 7038



**Harbor Grey**  
HRGR  
RAL 7040



**Bronze Matte**  
BMAT



**Bronze**  
BRNZ



**Deoro Gold**  
DEOR  
RAL 1012



**Blade Silver**  
BSIL



**Graphite Silver**  
GSIL



**Slate Grey**  
SLGR  
RAL 7021



**Ocean Blue**  
OCBL  
RAL 280-20-10



**Cove Blue**  
CVBL  
RAL 260-30-20



**Sagebrush Green**  
SBGN  
RAL 180-80-10



**Alpine Green**  
ALGN  
RAL 140-30-10



**Jet Black**  
JBLK  
RAL 9005



**Velvet Black**  
VBLK



**Vineyard Red**  
VNRD  
RAL 030-30-20



**Terracotta Canyon**  
TRCN  
RAL 2013



**Sierra Taupe**  
SSTP  
RAL 060-60-10

Printed brochure samples may not match actual finish samples. For accurate color matching, individual paint and finish samples are [available upon request](#). For more information about our finishes visit [visalighting.com/finishes](https://visalighting.com/finishes)

# Alternative Metal Finishes

We believe you should have design flexibility without harming the environment or breaking the bank. These specially developed alternative metal finishes utilize a dye application within a UV resistant clear coating over a recyclable aluminum substrate. The end result is natural metal appearance — with fewer environmental issues.



**Brushed Brass Alternative**  
BBA



**Rustic Brass Alternative**  
RBA



**Brushed Bronze Alternative**  
BZA



**Brushed Copper Alternative**  
BUA



**Satin Nickel Alternative**  
SNA



**Brushed Chrome Alternative**  
BCA




**Pewter Alternative**  
PRA




**Oil-Rubbed Bronze Alt**  
OBA

# Premium Metal Finishes


Visa Lighting premium metal finishes are spun, polished, and finished by artisans in our Milwaukee facility. All finishes are grade level 1. Each product specification sheet shows which finishes are available.




**Brushed Aluminum**  
BA




**Brushed Stainless Steel**  
BSS



**Polished Stainless Steel**  
PSS



**Brushed Brass**  
BB



**Polished Brass**  
PB

Printed brochure samples may not match actual finish samples. For accurate color matching, individual paint and finish samples are [available upon request](#). For more information about our finishes visit [visalighting.com/finishes](https://visalighting.com/finishes)



# Welcoming



**SASS** (OW2400)  
Wall Sconce  
*Velvet Black*



**ZUME OUT** (OP2122)  
Outdoor  
Luminous Globe  
*Bronze*



**ROCKET** (CP4430)  
Drum Pendant  
*Brushed Copper, Traffic White*



**SELECT** (CB5126)  
Wall Sconce  
*Rustic Brass Alternative*



## Warm and Inviting

For open air locations in hospitality, office buildings, or entertainment facilities, our luminaires are designed to create a warm and welcoming experience. Finishes such as Bronze, Velvet Black and Brushed Copper Alternative, are not only aesthetically pleasing but also complementary to today's social meeting places. The Zume Out globe provides a cheerful ambiance to a patio or courtyard, while the Riff drum pendant provides glare-free, even lighting over a seating area. Our lighting solutions combine functionality with a touch of grace, making gathering spaces both a practical and inviting environment for all.



Velvet Black  
VBLK



Brushed Copper  
Alternative  
BUA



Traffic White  
TRWT  
RAL 9016



Bronze  
BRNZ



Rustic Brass  
Alternative  
RBA

Printed brochure samples may not match actual finish samples. For accurate color matching, individual paint and finish samples are [available upon request](#). For more information about our finishes visit [visalighting.com/finishes](#)

Printed brochure samples may not match actual finish samples. For accurate color matching, individual paint and finish samples are [available upon request](#). For more information about our finishes visit [visalighting.com/finishes](#)



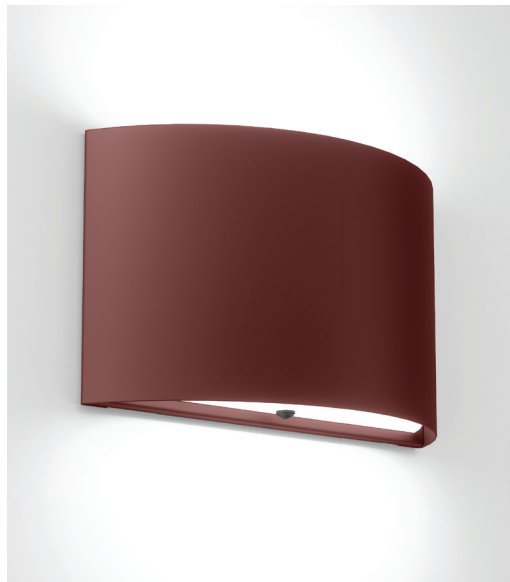
# Luxury



**THEO** (CP6860-13)  
Acrylic Rod Pendant  
*Harbor Grey*



**HELLEN** (CP4408)  
Dome Pendant  
*Ocean Blue, Agate Grey*



**WRAP** (CB3500)  
Curved Wall Sconce  
*Vineyard Red*

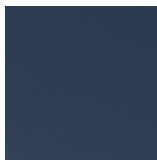


**SOUTH BAY** (TF1004)  
Table Lamp  
*Jet Black*

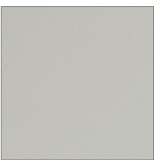


## Feel the Richness of Deep Hues

Make your hospitality space feel more luxurious by choosing a Wrap curved wall sconce with a rich Vineyard Red finish. Play with our expansive palette and choose two complementary colors like Ocean Blue and Brushed Bronze for a Hellen dome pendant. A South Bay table lamp in Jet Black will make a dramatic, eye level statement when used in sitting areas. Create a beautiful arrangement of overhead light with clusters of Theo acrylic rod pendants finished with Harbor Grey or Jet Black.



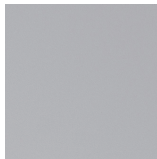
Ocean Blue  
OCBL  
RAL 280-20-10



Agate Grey  
AGGY  
RAL 7038



Vineyard Red  
VNRD  
RAL 030-30-20



Harbor Grey  
HRGR  
RAL 7040



Jet Black  
JBLK  
RAL 9005

Printed brochure samples may not match actual finish samples. For accurate color matching, individual paint and finish samples are [available upon request](#). For more information about our finishes visit [visalighting.com/finishes](#)

Printed brochure samples may not match actual finish samples. For accurate color matching, individual paint and finish samples are [available upon request](#). For more information about our finishes visit [visalighting.com/finishes](#)



# Calm



**GIG** (CB1800)  
Touch Controlled  
Sconce  
*Sierra Taupe*



**SYMMETRY** (CM1988-W)  
Overbed and  
Ceiling Light  
*Cove Blue*



**SANIBEL** (CB3944-26)  
**SOLE** (CB1857)  
Wall Sconce/Mirror  
*Shoreline Grey*



**LIBERTY** (SW7070-3G3S)  
Triple Gang Triple Switch  
Wall Switch  
*Traffic White*



## Provide a Comforting Space

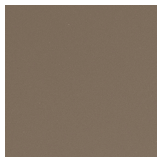
Color has been shown to have a measurable impact on mood. In behavioral health, color can play a crucial role in treatment. Soothing Cove Blue can be applied to a Symmetry overbed ceiling fixture, to provide a calming environment and to create a sense of well-being. Visa Lighting's Gig dimmable task light in Sierra Taupe adds a warm accent touch. The Sole Mirror and Sanibel sconce in Shoreline Grey provide a calming vanity space.



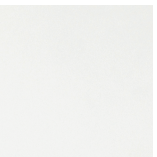
Cove Blue  
CVBL  
RAL 260-30-20



Shoreline Grey  
SHGR  
RAL 060-70-05



Sierra Taupe  
SSTP  
RAL 060-00-010



Traffic White  
TRWT  
RAL 9016

Printed brochure samples may not match actual finish samples. For accurate color matching, individual paint and finish samples are [available upon request](#). For more information about our finishes visit [visalighting.com/finishes](#)



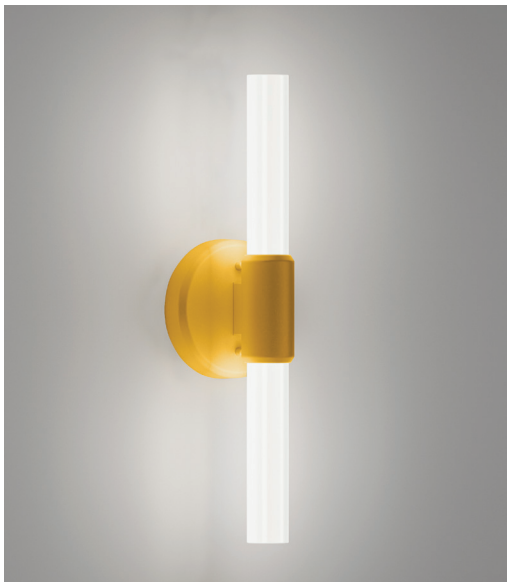
# Bold



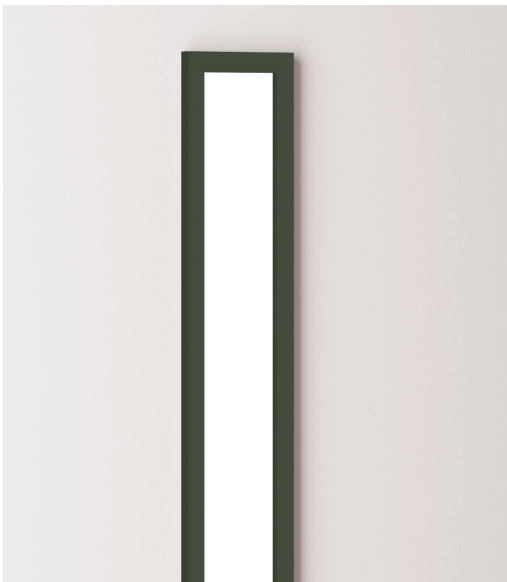
**NACELLE** (CP7100)  
Linear Pendant  
*Slate Grey, Glacier White*



**RIFF** (CP4420)  
Drum Pendant  
*Deoro Gold, Agate Grey*



**THEO** (CB6862)  
Double Rod Sconce  
*Deoro Gold*



**VISAGE** (CV1603)  
Recessed Ceiling &  
Wall Luminaire  
*Alpine Green*

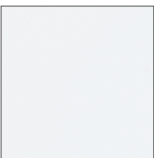


## Be Courageous with Vibrant Colors

Lend an air of authority to your space with bold color finishes like Alpine Green or Deoro Gold. These colors resonate when paired with a modern Theo double rod sconce or a stylish Riff drum pendant light. The sleek and practical Nacelle linear pendant, finished in Slate Grey and Glacier White, is eye-pleasing and an example of applying two complementary finishes to a fixture.



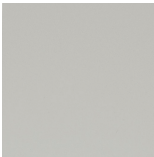
Deoro Gold  
DEOR  
RAL 1012



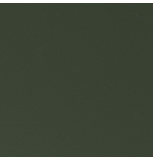
Glacier White  
GLWT  
RAL 9003



Slate Grey  
SLGR  
RAL 7021



Agate Grey  
AGGY  
RAL 7038



Alpine Green  
ALGN  
RAL 140-30-10

Printed brochure samples may not match actual finish samples. For accurate color matching, individual paint and finish samples are [available upon request](#). For more information about our finishes visit [visalighting.com/finishes](#)

Printed brochure samples may not match actual finish samples. For accurate color matching, individual paint and finish samples are [available upon request](#). For more information about our finishes visit [visalighting.com/finishes](#)





## Proudly Made in America

Visa Lighting products have been meticulously constructed by dedicated American workers in Milwaukee, WI for over 60 years. Our employees strive to consistently provide exceptional product with exceptional service every day. Our luminaires are created with a blend of old-world craftsmanship and new-world technologies. Highly skilled design, engineering, manufacturing, and assembly teams ensure fixture quality and artistry, while innovative machining methods ensure consistency and efficiency.

As an American manufacturer, you can have the peace of mind that comes from knowing your lighting product has contributed to American jobs and has been built according to American manufacturing standards. Plus, with engineering and manufacturing located together in the heartland of the U.S., we have the capability to customize products to your specific needs.

