

CM2060-W LENGA™

3" Dual Overbed Units – White LED


VisaLighting.com/products/Lenga

Type: _____ Project: _____ Location: _____

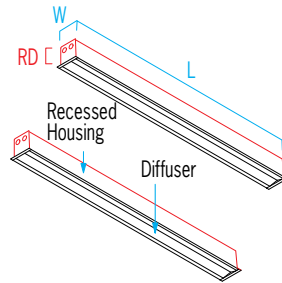
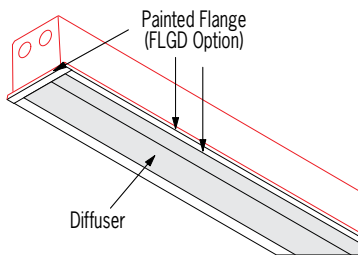


SET INCLUDES 2 UNITS IN TANDEM. ORDER ONE MODEL NUMBER PER SET.

DIMENSIONS

W = Width L = Length RD = Recessed Depth

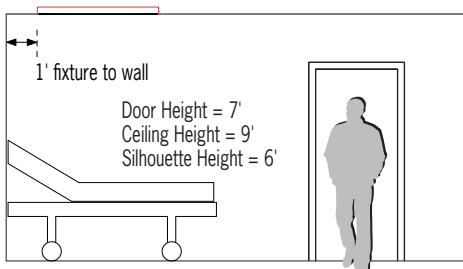
W 3-1/4" (83 mm)
L 47-3/4" (1213 mm)
RD 4" (102 mm)



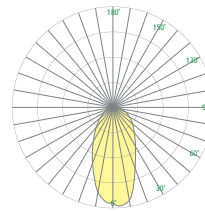
FEATURES

- Integral drivers
- Low voltage patient control (LVPC-DIM) switching interface accessory for pillow speaker/nurse call systems. Order separately, see page 3
- Optional 90+ CRI
- Left and right models wired discretely; units may be wired together in the field
- Chicago Plenum certified
- 4" recessed depth minimizes interference with systems within ceiling plenum
- Coextruded acrylic lenses
- Snap-in acrylic lens for toolless access
- Antimicrobial finishes (no VOC) on all interior and exterior painted surfaces
- ETL listed for damp locations. Not suited for exterior applications

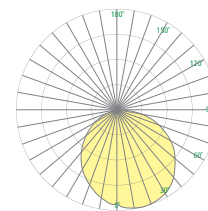
RELATIVE SCALE DRAWING



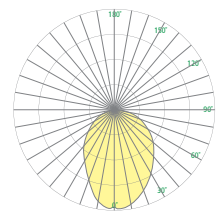
PHOTOMETRICS



Ambient



Exam



Ambient and Exam



Compliant



ETL Listed



5 Year Warranty

CM2060-W LENGA (cont.)

3" Dual Overbed Units – White LED



SOLD ONLY AS A DUAL OVERBED SET (SET INCLUDES TWO UNITS IN TANDEM)

Fill in shaded boxes using information listed below

CM2060-W						
MODEL	SOURCE ¹	SOURCE OPTION ²	VOLTAGE ³	DIMMING CONTROL ⁴ OPTION	FLANGE FINISH	MOUNTING ⁵
	L30K L35K L40K	90CRI Minimum 80CRI standard if option not selected	MVOLT 120V 277V 347V	DALI OSDX Dimmable 0-10V if option not selected	(FLGD mounting option only) See last page for finish order codes	FLGD TBAR

SOURCE¹ (Select one)

Dimmable 0-10V to 1% Minimum 80CRI, 3-step MacAdam

Source	CCT	Delivered Lumens	Power (Watts)
L30K	3000K	Ambient	2700
		Exam	8200
		Combined	10900
L35K	3500K	Ambient	2700
		Exam	8500
		Combined	11300
L40K	4000K	Ambient	2800
		Exam	8600
		Combined	11500

Note: Fixture provided with separate ambient and exam circuits

TM-30 DATA

For TM-30 data please contact us at info@visalighting.com

SOURCE OPTION²

Minimum 80CRI within 3-step MacAdam is standard if 90CRI is not selected

90CRI	Color rendering index minimum 90 CRI, (typical 93); minimum R9 value of 50 (delivered lumens reduced by 15%)
-------	--

VOLTAGE³ (Select one)

MVOLT	120-277V, 50/60 Hz
120V	120VAC, 50/60 Hz
277V	277V, 50/60 Hz
347V	347V, 50/60 Hz

DIMMING CONTROL OPTION⁴

⚠ Option availability may be interdependent with Voltage, Source or Other Options
0-10V dimmable to 1% if no dimming option is selected

DALI	Control via DALI protocol, dimming to minimum 1% (not available with 347V)
OSDX	Osram OSDX dimmable to 1%

MOUNTING⁵ (Select one)

FLGD	Flanged drywall ceiling (Select Finish Color)
TBAR	9/16" and 15/16" standard screw slot lay-in grid ceiling

CM2060-W LENGA (cont.)

3" Dual Overbed Units – White LED



LENGA PRODUCT FAMILY

- CM2060-W - 3" Dual Overbed Units
- CM2060-T - 3" Dual Overbed Units - Tunable
- CM2062-W - 3" Dual Overbed Units - Behavioral Health
- CM2062-T - 3" Dual Overbed Units - Tunable Behavioral Health

SUGGESTED VARIATIONS

- Custom colors

See VisaLighting.com/products/Lenga for more information

FINISHES

Specify color code when ordering. For accurate color matching, individual paint and finish samples are [available upon request](#).

For more information about our finishes visit visalighting.com/finishes

Powder Coat Paint Finishes (Standard)

						
AGGY Agate Grey	ALGN Alpine Green	BMAT Bronze Matte	BRNZ Bronze	BSIL Blade Silver	CVBL Cove Blue	DEOR Deoro Gold
						
GLWT Glacier White	GSIL Graphite Silver	HRGR Harbor Grey	JTBK Jet Black	OCBL Ocean Blue	SHGR Shoreline Grey	SBGN Sagebrush Green
						
SLGR Slate Grey	SSTP Sierra Taupe	TRCN Terracotta Canyon	TRWT Traffic White	VBLK Velvet Black	VNRD Vineyard Red	

ACCESSORY (Order Separately)

LVPC-DIM	Visa Lighting's low voltage patient control interface (3 load with dimming) requires minimum of 1 switch per zone (by others), mounts in electrical box (by others). Not compatible with -DALI or -OSDX options.
-----------------	---

