

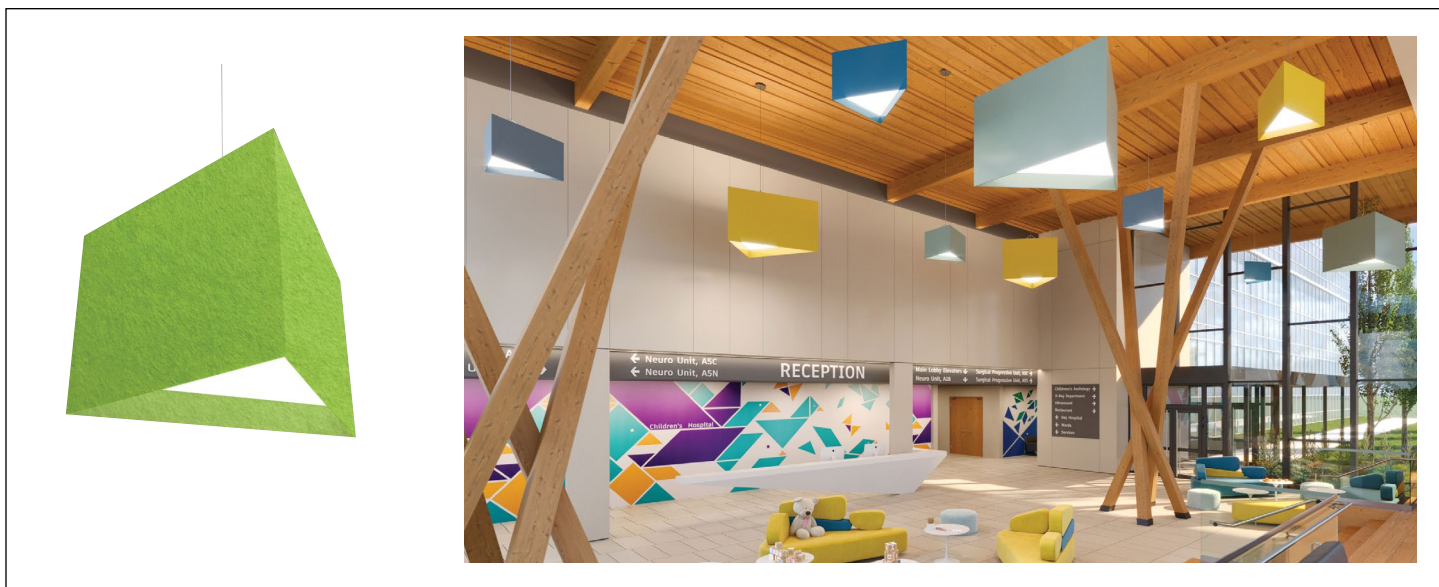
CP6130 CELEST TR™

Small 18" H - Acoustic Panels



VisaLighting.com/products/Celest-tr

Type: _____ Project: _____ Location: _____



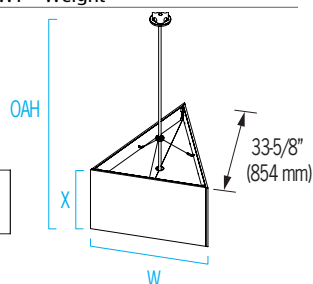
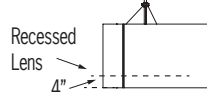
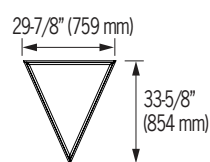
DIMENSIONS⁴

OAH MUST BE SPECIFIED

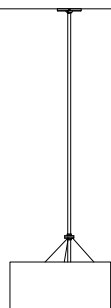
OAH is the distance (in inches) from the bottom of the fixture to the ceiling plane.

X = Body Height OAH = Overall Height WT = Weight

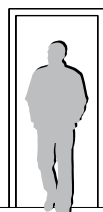
X	18" (457 mm)
OAH	72" (1829 mm)
WT	<50 lb



RELATIVE SCALE DRAWING



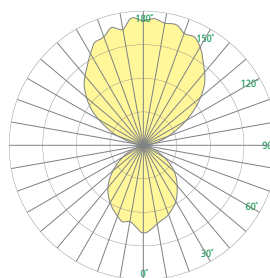
Door Height = 7'
Ceiling Height = 20'
Silhouette Height = 6'



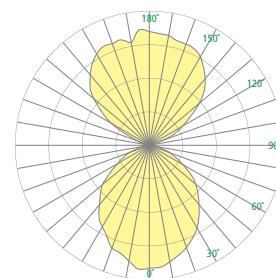
FEATURES

- Integral drivers
- Up & down light available in Direct-Indirect (DIRIND) or Semi-Indirect (SEMIND) distribution
- Uplight and downlight separately switched and dimmed (may be wired together during installation)
- Swivel ball & stem mount directly to structural blocking; wire connections can be made through a 4" octagonal 2-1/8" deep electrical junction box (by others)
- Inner luminous assembly suspended directly by stem, may be suspended and wired separately with outer shade panels installed later
- Outer shade panel assembly suspended via aircraft cables to stem collar with fittings concealed behind panels for height and levelling adjustment
- Frosted acrylic top and bottom lenses
- Shade panels are shipped disassembled for flat packing
- 100% recyclable polyester (PET) sound absorbing acoustic panels
- Acoustic panels meet fire resistant standard Class A (ASTM E-84)
- Non-VOC powder coat finish on stem and canopy and interior reflector
- ETL listed for damp locations. Not suited for exterior applications

PHOTOMETRICS



Semi-Indirect (SEMIND)



Direct-Indirect (DIRIND)



CP6130 CELEST TR (cont.)

Small 18" H - Acoustic Panels



Fill in shaded boxes using information listed below

CP6130			MVOLT			
MODEL	SOURCE ¹	DISTRIBUTION ²	VOLTAGE MVOLT	SOURCE OPTION ³	ACOUSTIC PANEL COLOR	OAH ⁴
	L30K(H) L30K(L) L35K(H) L35K(L) L40K(H) L40K(L)	SEMIND DIRIND		90CRI Minimum 80CRI is standard if option is not selected	See last page for finish order codes Canopy and stem painted white	

SOURCE ¹ (Select one)

Dimmable 0-10V to 1%, Minimum 80CRI, within 3-step MacAdam

Source	Distribution	Delivered Lumens	Power (Watts)
L30K(H)	SEMIND	5,500	51
	DIRIND	6,500	59
L30K(L)	SEMIND	2,500	23
	DIRIND	3,000	27
L35K(H)	SEMIND	5,500	51
	DIRIND	6,500	59
L35K(L)	SEMIND	2,500	23
	DIRIND	3,000	27
L40K(H)	SEMIND	5,500	51
	DIRIND	6,500	59
L40K(L)	SEMIND	2,500	23
	DIRIND	3,000	27

*Note: multiply by 0.85 for 90CRI delivered lumens

DISTRIBUTION ² (Select one)

SEMIND	Semi-indirect: 65% uplight, 35% downlight (approximate)
DIRIND	Direct-indirect: 50% uplight, 50% downlight (approximate)

VOLTAGE (Select one)

MVOLT fixture accepts 120 through 277 input voltage

MVOLT	120-277V, 50/60 Hz
-------	--------------------

SOURCE OPTION ³

Minimum 80CRI within 3-step MacAdam is standard if option is not selected

90CRI	Color rendering index minimum 90, minimum R9 value of 50 (lumen output reduced by 15%)
-------	----------------------------------------------------------------------------------------

LUMEN MAINTENANCE RATING

L90 (reported)	>55,000
----------------	---------

Reported Lifetime per IES TM-21

IMPERIAL SABINS (ft²)

SAA	5.8
NRC	5.9

Divide imperial sabins by 10.8 to find metric sabins in m²

SAA (Sound Absorption Average) is the average of absorption coefficients in 1/3-octave increments from 200Hz to 2500Hz.

NRC (Noise Reduction Coefficient) is the average of the absorption coefficients at 250Hz, 500Hz, 1000Hz, and 2000Hz.

CP6130 CELEST TR (cont.)

Small 18" H - Acoustic Panels



ACOUSTIC BENEFITS

- Reduce echos, background noise
- Clearer conversations
- Improves peacefulness of the area
- Improve the look of the room

ACOUSTIC PANEL CLEANING

- Vacuum to remove dust and debris
- Clean with a clean damp cloth or with soap and water.
Always test an inconspicuous area first

CELEST PRODUCT FAMILY

	Description	Model
Metal Panels	Celest SQ - Large	• CP6100
	Celest HX - Large	• CP6102
	Celest TR - Large	• CP6104
	Celest SQ - Small	• CP6106
	Celest HX - Small	• CP6108
	Celest TR - Small	• CP6110
Acoustic Panels	Celest SQ - Large	• CP6120
	Celest HX - Large	• CP6122
	Celest TR - Large	• CP6124
	Celest SQ - Small	• CP6126
	Celest HX - Small	• CP6128
	Celest TR - Small	• CP6130

SUGGESTED VARIATIONS

- Alternate control options
- No top lens
- Custom graphic or pattern printing on the acoustic panels
- Custom colors & finishes
- Mix & match panel colors (metal & acoustic)
- Shapes/perf in shades
- Luminous & non-luminous cutouts with mascots, logos, phrases, etc.



See [Visalighting.com/products/Celest](https://visalighting.com/products/Celest) for more information

CP6130 CELEST TR (cont.)

Small 18" H - Acoustic Panels



ACOUSTIC PANEL COLORS (Select one)
Specify color code when ordering.

Canopy and stem painted white. For more information about our finishes visit visalighting.com/finishes/acoustic
100% recyclable polyester (PET) acoustic felt

Acoustic Felt Colors (Standard)



Acoustic Felt Colors (Premium)

Contact factory for lead time when ordering premium colors

